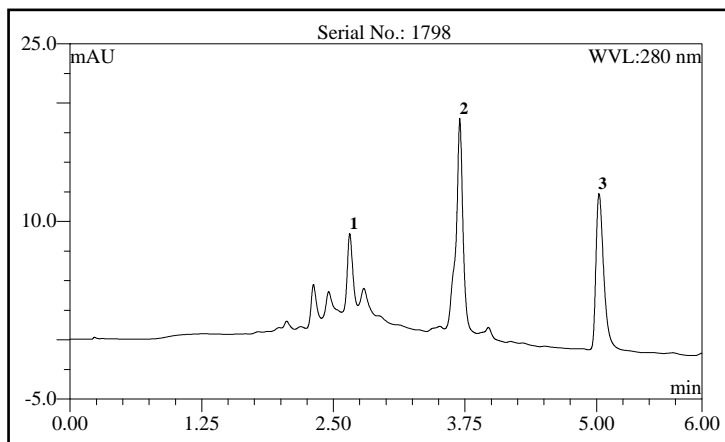


ProSwift™ SAX-1S
4.6 x 50 mm
Product No. 064293

Date: 23-Feb-21 16:28
Serial No. : 001798
Lot No. : 02004070

Eluent A: 10 mM Tris, pH 7.6
Eluent B: 1M Sodium Chloride in 10 mM Tris, pH 7.6
Gradient: 0% to 75% B in 9 minutes, Step 100% B, Hold 3 minutes.
Flow Rate: 2.0 mL/min
Temperature: 30 °C
Detection: UV 280 nm
Injection Volume: 10 µL
Storage Solution: 0.05M NaCl in 10 mM Tris, pH 7.6 + 0.1% Sodium Azide



No.	Peak Name	Ret.Time (min)	Asymmetry (EP)	Resolution (EP)	Peak Width (50%) (min)	Concentration (mg/mL)
1	Ovalbumin	2.65	0.8	9.94	0.06	1.0
2	Trypsin Inhibitor	3.70	0.9	11.27	0.06	1.0
3	Insulin Chain A	5.02	1.6	n.a.	0.08	0.25

QA Results:

Component	Parameter	Specification	Results
	Pressure	<=880	359
Insulin Chain A	Asymmetry	1.0-1.8	Passed
Insulin Chain A	PW (50%)	<=0.11	Passed
Insulin Chain A	Ret. Time	4.99-5.21	Passed
T1/T2	Ret.Time Ratio	1.04-1.54	Passed

T1 = Ret.Time of Insulin Chain A minus Trypsin Inhibitor

T2 = Ret.Time of Trypsin Inhibitor minus Ovalbumin

Production Reference:

Datasource: Mono
Directory: MonoA\MonoA_1\064293_SAX-1S
Sequence: 064293_2020-004-070_1541840
Sample No.: 49

Chromleon™ Dionex™ Corporation 1994-2022

Doc.No.: 067099-04 (QAR)

6.80 SR15 Build 4656 (243203)